

MAGPOW

Since 1989
MAGPOW ADHESIVE GROUP

US MAGIC GLUE LLC

ADDRESS: 3592 ROSEMEAD BLVD, STE B#220, ROSEMEAD, CA91700, USA
Tel: 001-209-2471160

HUNAN MAGPOW ADHESIVE GROUP CO., LTD.

Address: Lanshi Road, Changsha National Biomedical Base, Liuyang,
Changsha city, Hunan Province, China. Post Code: 410300
Tel: 0086-731-83285111 E-mail: info@magicglue.net
0086-731-83285000 Website: www.magicglue.net
Fax.: 0086-731-83285126

About MAGPOW



Hunan MAGPOW Adhesive Group Co.,Ltd is a Hi-tech enterprise in developing, manufacturing and sales of all kinds of adhesive with head office in Changsha National Biomedical Base, Hunan, China. The company is authorized as Hunan provincial famous brand, the implementary unit of national torch program, the qualification by ISO9001:2000 international quality system, the member of China Adhesive Industry Association. Main product with "MAGPOW" brand is authorized as Hunan provincial famous trademark. The company has powerful researching ability by long-term hiring foreign adhesive experts from Germany, France and national wide famous experts for development of technology and technical instruction. Products include epoxy steel, super glue, gasket maker, resin, water-base wood glue, silicone sealant, contact cement, PVC glue, foam glue, mouse-killing glue, fly killing glue etc, which is used in architecture, interior decoration, military industry, Electronic industry, stone manufacture, fireworks and many more industrials. Our products are available in more than 60 countries over the world. You can find them in America, South America, Europe, Asia, Africa and middle East. The company wants to create limitless value for you by its so many years accumulation of experience.



Raw material produce



Scientific research innovation



Glue produce



Product quality test



Small package filling



Big package filling



Packing workshop

Technique Center



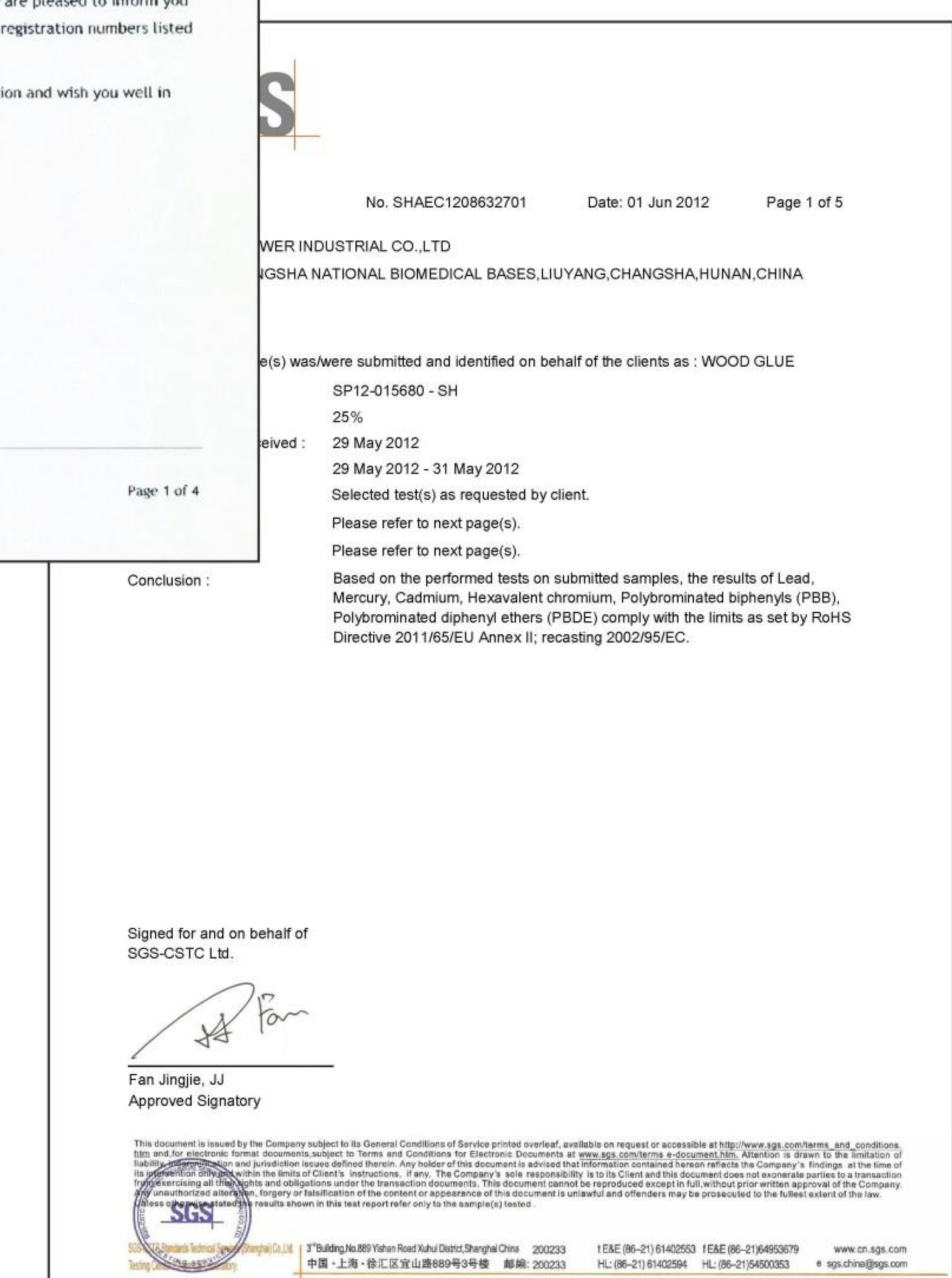
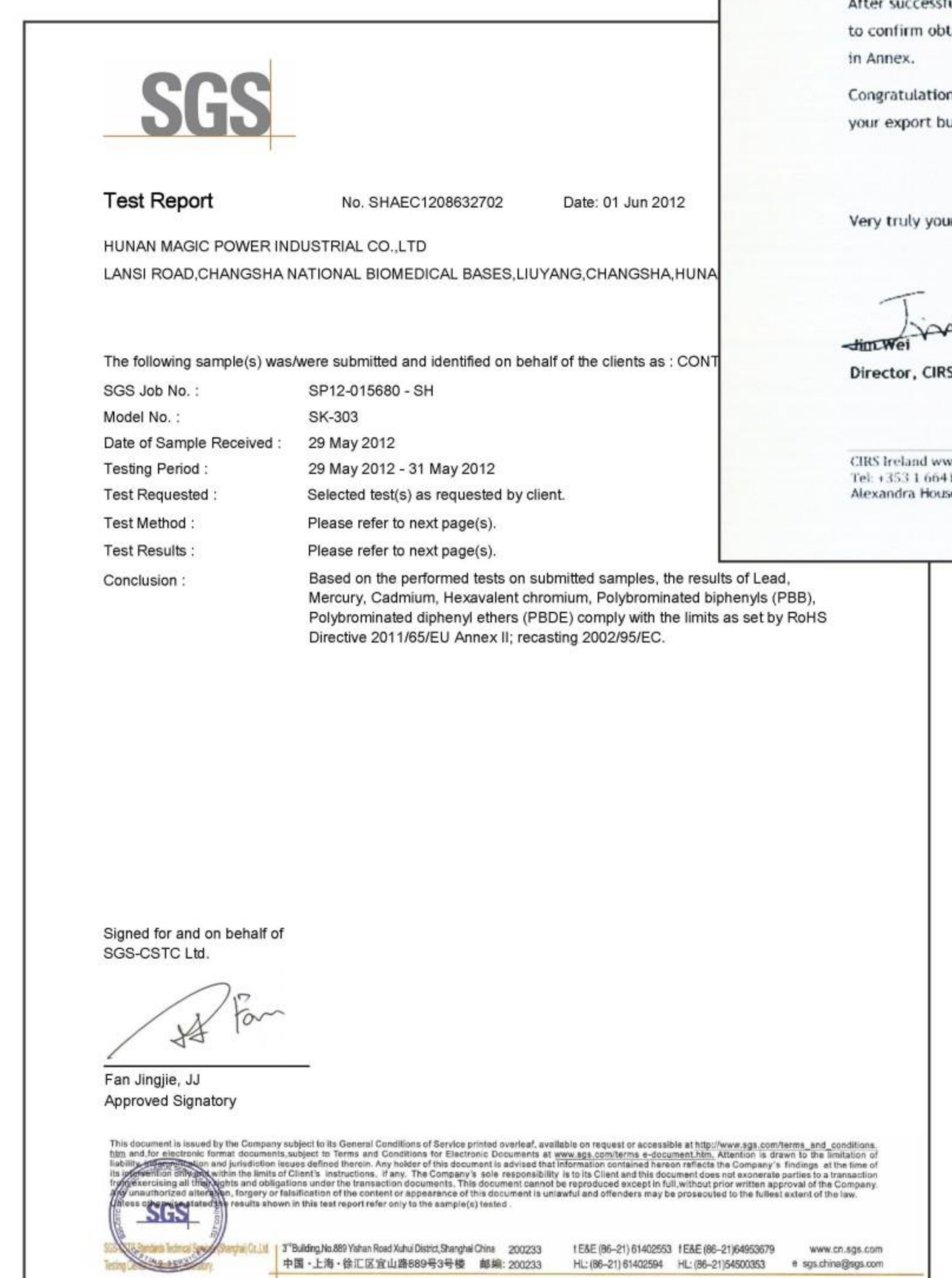
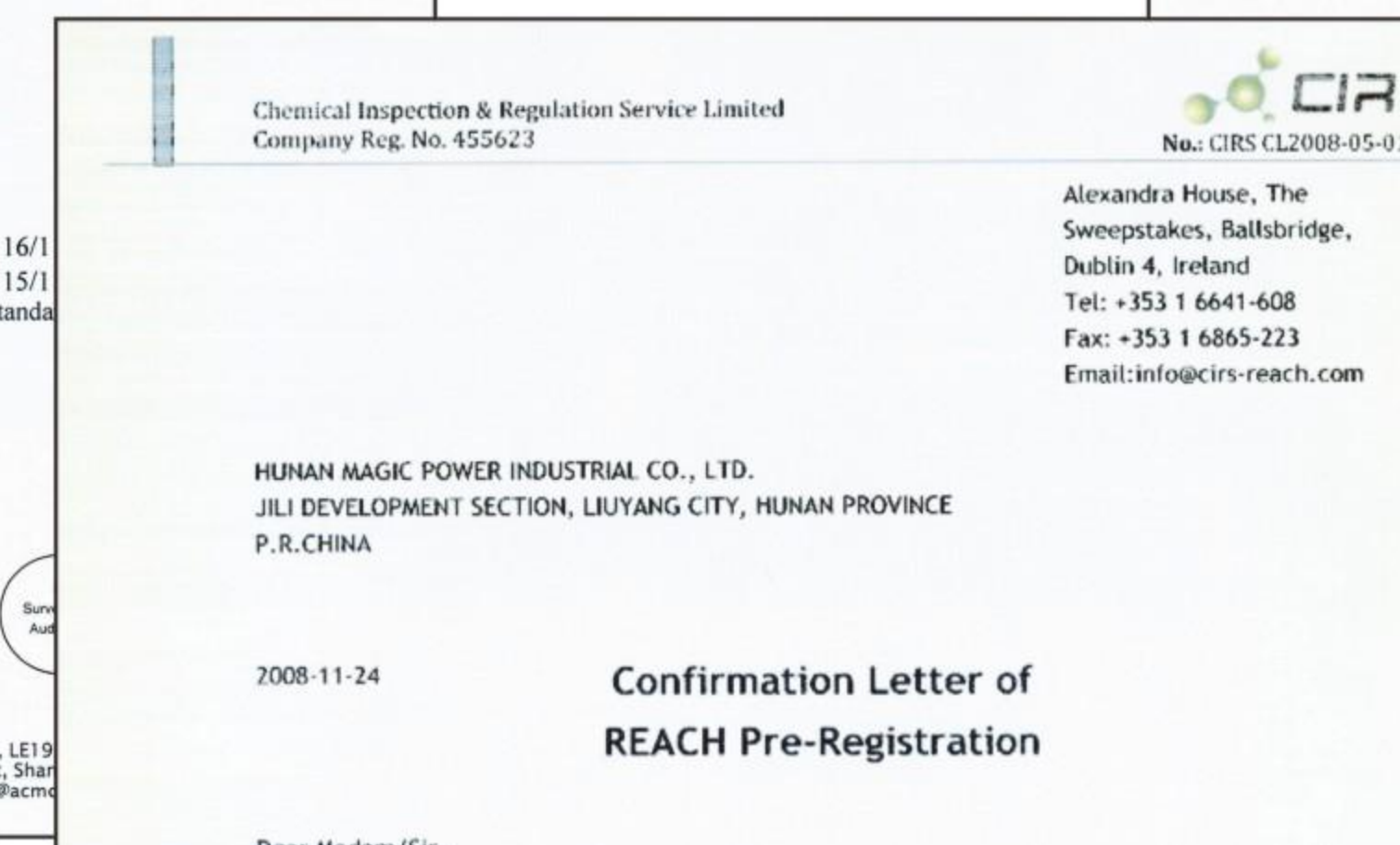
Scientific Ability & Quality Control

Since 1995, our Company start focus on Research Innovation. have put Scientific Research in very important position as we understood that technology is the main point for the growth. therefore, we had hired international adhesive experts from USA, UK, Germany, France and national Famous experts for development of technology also put quality control system into production process. our company has very tight control of quality, We delivery the goods only when the products are checked & Test passed. our brand has good reputation in market & it is available in more than 60 Countries over the word.



Enterprise Honor

Through the market stratagem of prompting brand by products' quality and protecting brand by intellectual property, at present, the corporation has established sales net work points in more than 60 countries, formed an international sales line grounded on domestic trade. The corporation's products have passed ISO9001 Quality System Certification & ISO14000 Environment System Certification.



CONTENTS

Auto Spare Parts And Hardware

EPOXY ADHESIVE	1
AUTO-PARTS QH AB GLUE	3
EPOXY PUTTY & EPOXY STICK	4
HIGH GRADE ACETIC GASKET MAKER	5
RUBBER PATCH	7

Construction And Decoration

CONSTRUCTION EPOXY	8
WOOD GLUE	9
CONTACT CEMENT	10
UNIVERSAL DECORATION ADHESIVE(SBS)	12
PVC GLUE	13
ACETOXY SILICONE	14
NEUTRAL SILICONE	15
MODIFIED SILICONE	16
CAULK	17
FIXING FOAM	18

Daily Necessary

SUPER GLUE LIQUID AND GEL	19
MOUSE & FLY KILLING GLUE	20
ALL PURPOSE ADHESIVE	21

Auto Spare Parts And Hardware

EPOXY ADHESIVE

Main Component

Component A is the modified Epoxy Resin, component B is modified Curing Agent.

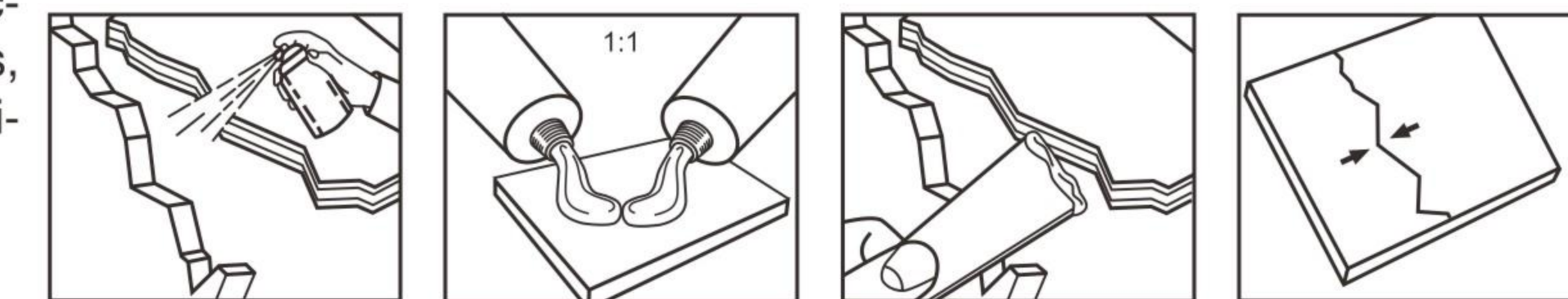
Scope Of Application

The products of these series are widely used for bonding all kinds of hard materials, like iron, casting iron, steel, aluminum, concrete, glass, pottery, graphite, etc. And they could be applied to bond and repair in the field of daily households, home, appliances, machine implement for agriculture, machine facilities, apparatus, stationary tools, cas, furniture, tube of water, valves, chemical piping, water towers, motorcycle etc.

Storage And Packing

1.Store in shady and cool place. The shelf life is 12 months from the date of production. It is available to reuse based on passing the test if being beyond the shelf life.

2.Preserve and transport as non-dangerous products.



Technical Feature

Name Of Product	Item Code	Mixing Ratio (A:B)	Appearance	Curing time (25°C mix glue 3-8g)	Shear Strength (25°CX48h,Steel-Steel)
5 Minutes Rapid Clear Epoxy Adhesive	SK-111	A:B=1:1	Clear color thick liquid for both Component A and B	3-5 Mins	≥10MPa
5 Minutes Rapid White&Black Epoxy Adhesive	SK-1111	A:B=1:1	Component A is white thick liquid, B is black thick liquid	3-5 Mins	≥10MPa
5 Minutes Rapid White&Black Epoxy Adhesive (Extra weight added)	SK-1112	A:B=1:1	Component A is white mucus and B is black mucus	3-5 Mins	≥10MPa
8 Minutes Rapid Clear Epoxy Adhesive	SK-112	A:B=1:1	Component A and B are clear or light yellow liquid	5-10 Mins	≥5MPa
8 Minutes Rapid White&Black Epoxy Adhesive	SK-1121	A:B=1:1	Component A is white mucus and B is black mucus	5-10 Mins	≥5MPa
8 Minutes Rapid White&Black Epoxy Adhesive (Extra weight added)	SK-1122	A:B=1:1	Component A is white mucus and B is black mucus	5-8 Mins	≥10MPa
30 Minutes Rapid Black & White Epoxy Adhesive	SK-113	A:B=1:1	Component A is white mucus and B is black mucus	20-25 Mins	≥10MPa

Auto Spare Parts And Hardware

EPOXY ADHESIVE



ITEM
MPA101
SOLIDIFYING TIME
3-5mins
SPECIFICATION
20g/set, 12sets/inner,
12inners/ctn
MEAS
36X30.5X44.5cm



ITEM
MPA110
SOLIDIFYING TIME
3-5mins
SPECIFICATION
24ml/set, 12sets/inner,
12inners/ctn
MEAS
42.2X37.3X48.5cm



ITEM
MPA102
SOLIDIFYING TIME
3-5mins
SPECIFICATION
30g/set, 12sets/inner,
12inners/ctn
MEAS
43.5X32.5X44.5cm



ITEM
MPA111
SOLIDIFYING TIME
3-5mins
SPECIFICATION
57g/set, 12sets/inner,
12inners/ctn
MEAS
43.5X32.5X44.5cm



ITEM
MPA103
SOLIDIFYING TIME
5-10mins
SPECIFICATION
28g/set, 12sets/inner,
12inners/ctn
MEAS
43.5X32.5X44.5cm



ITEM
MPA104
SOLIDIFYING TIME
5-8mins
SPECIFICATION
56g/set, 12sets/inner,
12inners/ctn
MEAS
43.5X32.5X44.5cm



ITEM
MPA108
SOLIDIFYING TIME
5-10mins
SPECIFICATION
30g/set, 12sets/inner,
12inners/ctn
MEAS
43.5X32.5X44.5cm



ITEM
MPA105
SOLIDIFYING TIME
20-25mins
SPECIFICATION
30g/set, 12sets/inner,
12inners/ctn
MEAS
43.5X32.5X44.5cm

Auto Spare Parts And Hardware

AUTO-PARTS QH AB GLUE

Main Component

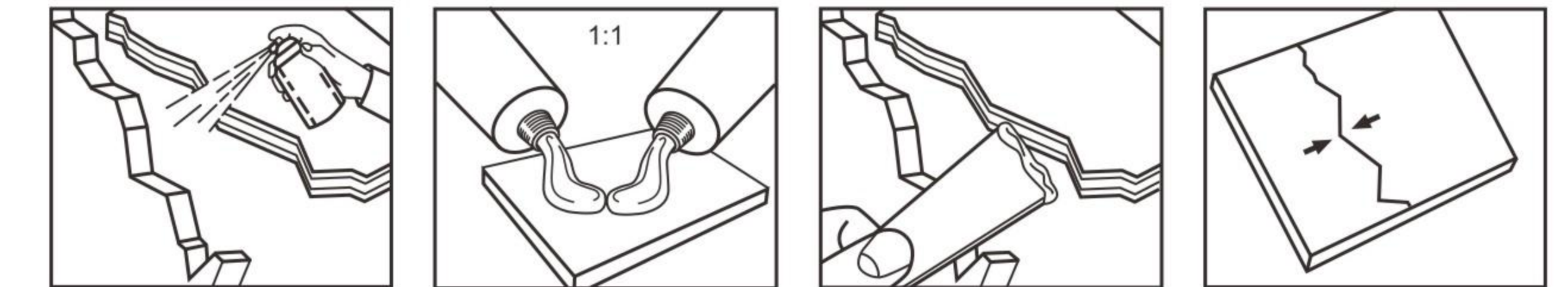
A component is the modified Acrylic ester, the B is modified Curing Agent.

Scope Of Application

Quick adhesive, repairing and sealing for iron, steel, aluminium, stainless steel, ABS plastics, pvc material, polystyrene, glasses and acrylic etc or special material. House commodities' repairing and sealing for car, motorcycle, tractor, and all kinds of components of machines.

Storage And Packing

1. Keep cool under 20°C, keep dry, seal, valid within 12 months.
2. Preserve and transport as non dangerous products.



Technical Feature

Name Of Product	Appearance	Applying temperature (°C)	Curing time (25°C, min)	Shear strength (Steel-Steel, MPa)
Auto-parts glue	Component A is light blue thick liquid. Component B is light red thick liquid.	-30~100	≤10	≥10MPa



ITEM
MPA113
FIRST SOLIDIFYING TIME
≤10 mins
SPECIFICATION
20g/box, 100boxes/ctn
MEAS
12X21.5X43cm



ITEM
MPA114
FIRST SOLIDIFYING TIME
≤10 mins
SPECIFICATION
80g/box, 100boxes/ctn
MEAS
28.5X61.5X14cm



ITEM
MPA112
FIRST SOLIDIFYING TIME
≤10 mins
SPECIFICATION
20g/card, 20cards/box, 20boxes/ctn
MEAS
68X38.3X33cm



ITEM
MPA109
FIRST SOLIDIFYING TIME
≤10 mins
SPECIFICATION
30g/set, 12sets/inner, 12inners/ctn
MEAS
43.5X32.5X44.5cm

Auto Spare Parts And Hardware

EPOXY PUTTY & EPOXY STICK

Main Component

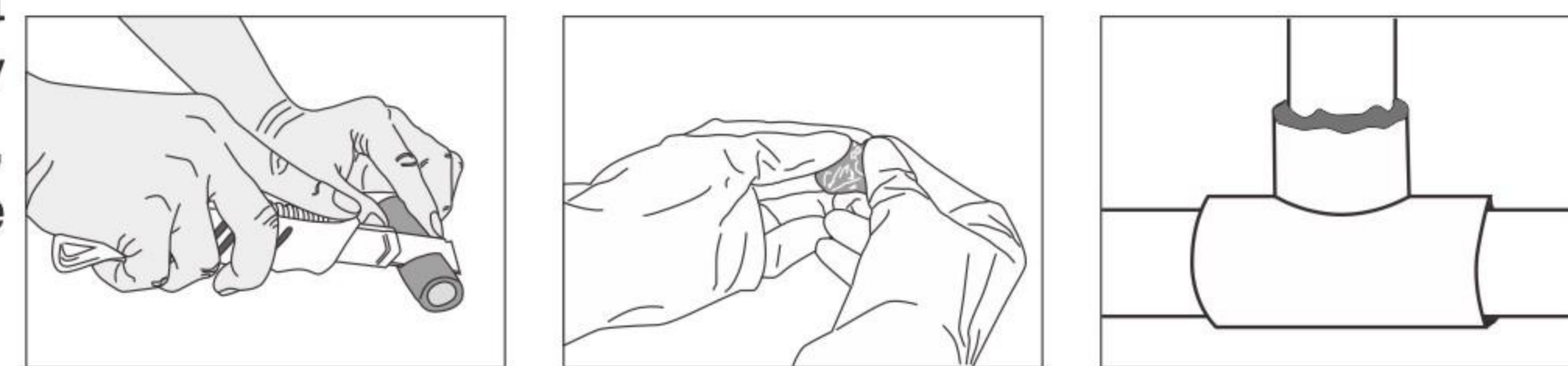
Component A is the modified Epoxy Resin, B is modified Curing Agent.

Scope Of Application

Epoxy Putty is one of those repair materials that every household should have a supply of. Because it is so versatile that you can use it in almost any job you can think of. By just simply well mix the two soft parts you can use it in plug the hole of a leaking pipe, fix the gap of cracked ceramic, marble slabs or bathroom tiles and you can fix the hole in metalwork caused by the rust etc. It is a powerfully adhesive, it bonds to virtually any surface, it is waterproof. It can be shaped, moulded, sculpted, drilled, sawed cut and painted. It is one of the easiest repair compounds to use.

Storage And Packing

1. Store the products with air-tight seal in the place of shade and dry. The shelf life is 12 months. It is available to reuse based on passing of the test if being beyond the shelf life.
2. Preserve and transport as non-dangerous products.



Technical Feature:

Name Of Product	Item Code	Appearance	Usable Time (25°C, 3-5g)	Curing time (25°C, 3-5g)	Hardness (25°CX24h, Shore D)	Shear Strength (25°CX48h, Steel-Steel)
5 Minutes Epoxy Stick	SK-123	A component is white; B component is gray cement	3-5 Mins	10-30 Mins	80-85	≥8MPa
30 Minutes Epoxy Putty	SK-125	A component is white; B component is gray cement	20-30 Mins	40-60 Mins	80-85	≥8MPa



ITEM
MPA106
USABLE TIME
≤5mins
SPECIFICATION
57g/set, 12sets/inner, 12inners/ctn
MEAS
38.5X32.5X42.5cm



ITEM
MPA107
USABLE TIME
≤20-30mins
SPECIFICATION
57g/set, 12sets/inner, 12inners/ctn
MEAS
38.5X32.5X42.5cm

Auto Spare Parts And Hardware

HIGH GRADE ACETIC GASKET MAKER

Main Component

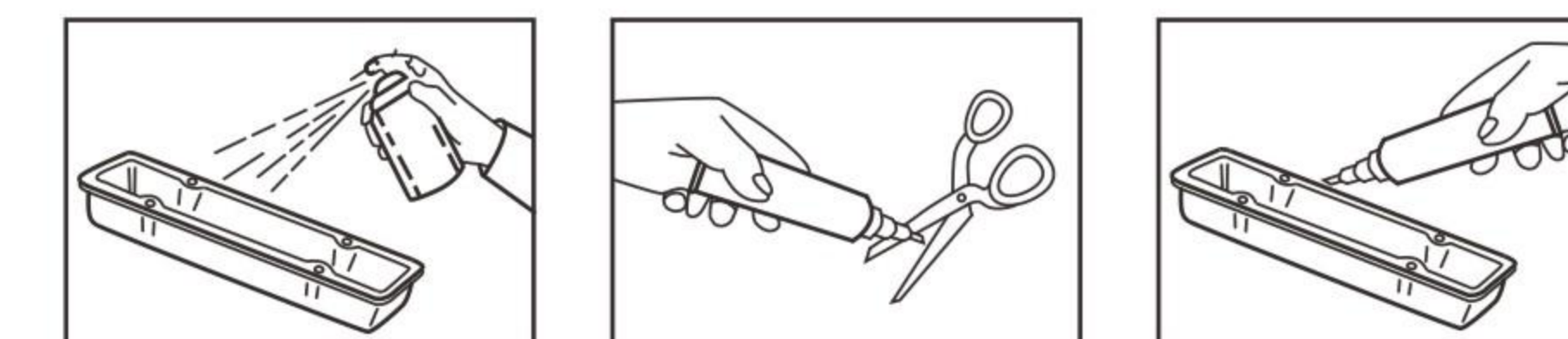
Silicone

Scope Of Application

RTV (Room temperature vulcanizing) silicone forms replacements for cork, paper, asbestos and felt pre-cut gasket. This RTV silicone can also provide sealing for windshields, sunroofs, doors, lights hose connection and more. This silicone dries tough and remains flexible can be used on oil pans, rear end housing, water pumps, valve covers, thermostat housing.

Storage And Packing

1. This product is non-flammable, seal store in 10-27°C cool dry place.
2. The shelf life for top grade acetic gasket maker is 12 months from date of production.



Technical Feature

No.	Item	Technical Parameter	
		Top grade	
1	Appearance	Uniform delicate cream, without crust, gel, caking, no bubbles, no easily dispersed precipitates	
2	Prolapse Distance	Vertical, mm	≤3
		Acclinic	No distortion
3	Density	0.93-0.98	
4	Extrusion, ml/min	≥400	
5	Surface Dry Time, min	5-15	
6	Shore A(HSA)	20-30	
7	23°C Standard extend	≥0.4	
8	Bonding destroy area under standard condition %	≤5	
9	Elastic recover rate%	≥80	
10	Extend bond rate under standard condition	100% no damage	
11	Solidify speed mm/24h	3-8	
12	Leakage rate	≤2	
13	Using temperature	-40~240°C	



ITEM
MPB101
SPECIFICATION
45g/set, 12sets/inner, 12inners/ctn
MEAS
53.8X42.8X28.9cm

ITEM
MPB102
SPECIFICATION
45g/set, 12sets/inner, 12inners/ctn
MEAS
53.8X42.8X28.9cm

ITEM
MPB103
SPECIFICATION
45g/set, 12sets/inner, 12inners/ctn
MEAS
53.8X42.8X28.9cm

ITEM
MPB104
SPECIFICATION
45g/set, 12sets/inner, 12inners/ctn
MEAS
53.8X42.8X28.9cm

ITEM
MPB105
SPECIFICATION
45g/set, 12sets/inner, 12inners/ctn
MEAS
53.8X42.8X28.9cm

Auto Spare Parts And Hardware

HIGH GRADE ACETIC GASKET MAKER



ITEM
MPB106
SPECIFICATION
85g/set, 12sets/inner,
12inners/ctn
MEAS
67.3X42.8X28.9cm

ITEM
MPB107
SPECIFICATION
85g/set, 12sets/inner,
12inners/ctn
MEAS
67.3X42.8X28.9cm

ITEM
MPB108
SPECIFICATION
85g/set, 12sets/inner,
12inners/ctn
MEAS
67.3X42.8X28.9cm

ITEM
MPB109
SPECIFICATION
85g/set, 12sets/inner,
12inners/ctn
MEAS
67.3X42.8X28.9cm

ITEM
MPB110
SPECIFICATION
85g/set, 12sets/inner,
12inners/ctn
MEAS
67.3X42.8X28.9cm

Technical Feature

Type	Curing time(s)	Dynamic Viscosity (20°C, mPa.s)	Tensile-shear strength (60°C×3h, MPa)
Super glue	≤25	30-40	≥8



ITEM
MPB121
SPECIFICATION
85g+3g/set, 12sets/inner,
12inners/ctn
MEAS
67.3X42.8X30.9cm

ITEM
MPB122
SPECIFICATION
85g+3g/set, 12sets/inner,
12inners/ctn
MEAS
67.3X42.8X30.9cm

ITEM
MPB123
SPECIFICATION
85g+3g/set, 12sets/inner,
12inners/ctn
MEAS
67.3X42.8X30.9cm

ITEM
MPB124
SPECIFICATION
85g+3g/set, 12sets/inner,
12inners/ctn
MEAS
67.3X42.8X30.9cm

ITEM
MPB125
SPECIFICATION
85g+3g/set, 12sets/inner,
12inners/ctn
MEAS
67.3X42.8X30.9cm

Auto Spare Parts And Hardware

RUBBER PATCH

Capability & Function

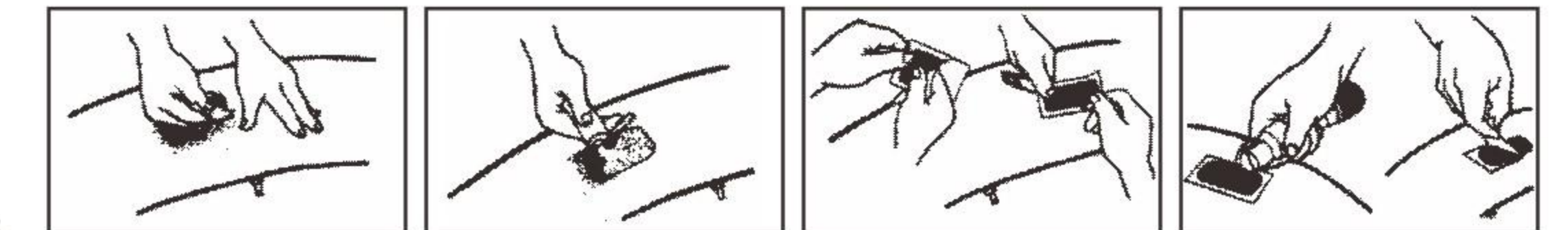
Circular cold mending adhesive patch for inner tube, Can repair circular injure in inner tube. The circular cold patch is made up by two parts: half sulfuration touch part and whole sulfuration fortified part. By using the rubber solution for inner tube, the circular cold patch could finish the sulfuration process with- out heating, so the patch and the inner tube become one whole part.

Application

It is mainly used to repair the tires of the bicycles, motorcycles and cars.

Storage And Packing

1. Ship according to normal chemical product.
2. Store in shady and cool place, the shelf life is 12 months.



ITEM: MPD181
SPECIFICATION: 12pc/box,
10boxes/bag, 20bags/ctn
MEAS: 67.5X30.6X26.5cm



ITEM: MPD182
SPECIFICATION: 24pc/box,
10boxes/bag, 20bags/ctn
MEAS: 67.5X30.6X26.5cm



ITEM: MPD183
SPECIFICATION: 48pc/box,
10boxes/bag, 20bags/ctn
MEAS: 67.5X30.6X26.5cm



ITEM: MPD184
SPECIFICATION: 15g/pc, 12pcs/box,
12boxes/packing, 8packings/ctn
MEAS: 50X46X28.5cm

Construction And Decoration

CONSTRUCTION EPOXY

Main Component

Part A: epoxy resin
Part B: modified amine hardener

Scope Of Application

This product is mainly used for bonding and hanging the indoor stone, like directly bonding and hanging the marble & granite etc on the indoor wall or on the concrete wall with metal, also can be used for bonding the different materials like stone, metal, concrete,

cement block, clay brick etc .

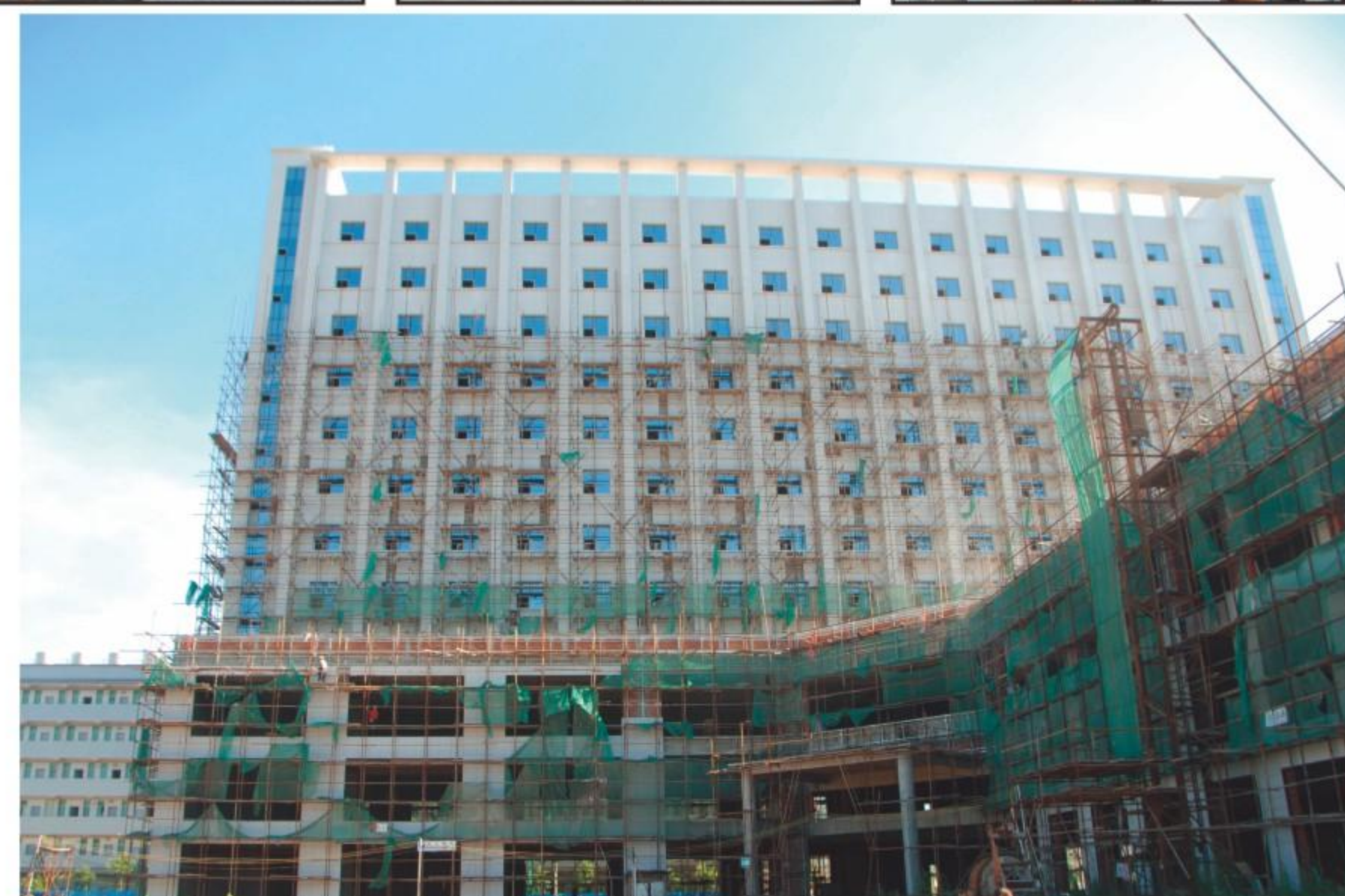
Storage And Packing

1. The product should be stocked in the dry, ventilate and cool place, the shelf life is one year, can be continue using if the test is ok.
2. This product is common dangerous product, have to be kept away with the fire, heat source, avoid the raining and sunning. Slowly loading, and avoid impact, inversion, roll etc.



Technical Feature

Item	Parameter	
Appearance	Part A	Off-white paste
	Part B	Light-yellow paste
Usable time(min)	40-60	
Curing time(h)	1-3	
Tensile-shear strength(MPa)	≥8	
Pressure-shear strength (Standard condition, 48h,MPa)	stone-stone	≥10
	stone-stainless steel	≥7



ITEM MPJ101
SPECIFICATION 9kg/set, 2sets/ctn
MEAS 44.5X44.5X23.5cm



ITEM MPJ102
SPECIFICATION 18kg/set, 1set/ctn
MEAS 52X26.5X24.5cm

Construction And Decoration

WOOD GLUE

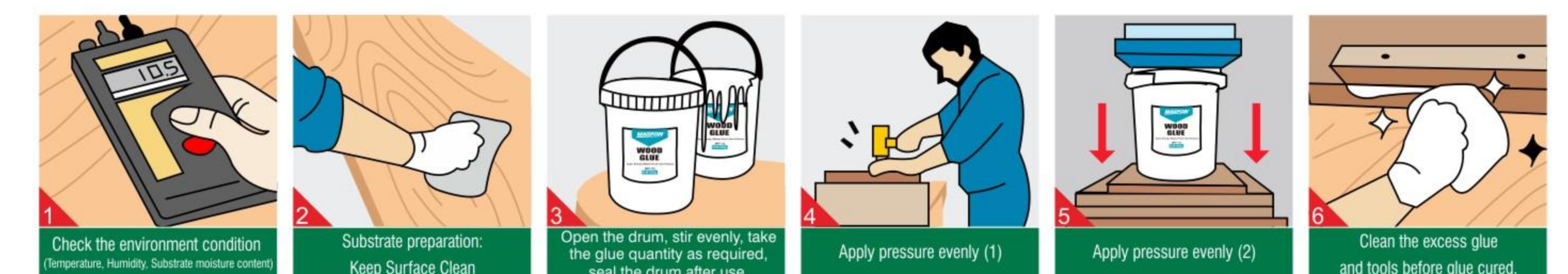
Main Component

Polyvinyl acetate emulsion unit, water, filler.

laminati- on even emulsion breaking, then cannot continue to use.

Storage And Packing

1. The product should be stored at temperature 5~37°C in sealed non-metal container, prevent from freeze and high temperature. The shelf life is 12 months from the date of production. It is available to use based on passing of the test if being beyond the shelf life.
2. If the glue slightly freezes, place in 30~40°C greenho- uses the full alleviation, and stirs evenly, does not affect the use. If the glue long time receives seriously freezes, cannot alleviate, appears agglomerates, the



Technical Feature

Commodity	Item	Appearance	PH	Viscosity (25°C) , mPa.s	Shear Strength. MPa	Solid content(%)
20% Solid content	SK-221	Milk white Mucus, no obvious granule	4-6	15000-25000	≥ 4	20 ± 2
25% Solid content	SK-2072		4-6	15000-25000	≥ 4	25 ± 2
30% Solid content	SK-2073		4-6	15000-25000	≥ 4	30 ± 2
40% Solid content	SK-2074		4-5	15000-25000	≥ 4	40 ± 2
50% Solid content	SK-2075		4-5	15000-25000	≥ 5	50 ± 2



ITEM MPF101
SPECIFICATION 500g/pc, 24pcs/ctn.
MEAS 54X37X13cm



ITEM MPF106
SPECIFICATION 250g/pc, 48pcs/ctn.
MEAS 44X30X19cm



ITEM MPF102
SPECIFICATION 1kg/pc, 12pcs/ctn.
MEAS 39X29.5X17cm



ITEM MPF105
SPECIFICATION 100g/pc, 12pcs/inner, 6inners/ctn.
MEAS 38X17.5X36.5cm



ITEM MPF107
SPECIFICATION 40g/card, 12cards/inner, 12inners/ctn.
MEAS 42X32.5X39.5cm



ITEM MPF103
SPECIFICATION 25kg/pc, 1pc/ctn.
MEAS 33X33X39cm



ITEM MPF113
SPECIFICATION 20kg/pc



ITEM MPF112
SPECIFICATION 10kg/pc, 2pc/ctn.
MEAS 55.7X27.8X29.5cm



ITEM MPF104
SPECIFICATION 5kg/pc, 4pcs/ctn.
MEAS 39X33X26.5cm

Construction And Decoration

CONTACT CEMENT

Main Component
Neoprene

Scope Of Application

This product is mainly used in architecture, decoration, furniture, as well as the bond of aluminum board, fireproof board, man-made board, rubber, leather, etc.

Storage And Packing

1. Stock the products in the air-tight seal at the temperature of 10-35°C.
2. The shelf life is 12 months. It is available to use based on passing of the test if being beyond the shelf life.
3. Preserve and transport as flammable products.



Technical Feature

Name Of Product	Appearance	Viscosity (25°C, mPa.S)	Solid Content (%)	Peel Strength (25°Cx48h, canvas-canvas N/2.5cm)
Contact Cement (303)	Light yellow thick liquid	2000-4000	≥20	≥60
Contact Cement (305)	Light yellow thick liquid	1500-2500	≥17	≥40
Contact Cement (Environmental-3062)	Light yellow thick liquid	1000-2500	≥22	≥60



ITEM
MPD102
GLUE TYPE
303
SPECIFICATION
1L/tin, 12tins/ctn
MEAS
34X23X29.5cm



ITEM
MPD103
GLUE TYPE
303
SPECIFICATION
3L/tin, 6tins/ctn
MEAS
35X28X28.5cm



ITEM
MPD121
GLUE TYPE
303
SPECIFICATION
4L/tin, 4tins/ctn
MEAS
35X22.5X28.2cm



ITEM
MPD113
GLUE TYPE
303
SPECIFICATION
18L/tin, 1tin/ctn
MEAS
24.8X24.8X37.7cm

Construction And Decoration

CONTACT CEMENT



ITEM
MPD104
GLUE TYPE
305
SPECIFICATION
50ml/pc, 25pcs/bag, 8bags/ctn
MEAS
36X31X29.5cm



ITEM
MPD109
GLUE TYPE
305
SPECIFICATION
125ml/pc, 25pcs/bag, 4bags/ctn
MEAS
48.5X42X22.5cm



ITEM
MPD110
GLUE TYPE
305
SPECIFICATION
250ml/tin, 48tins/ctn
MEAS
31.7X24.1X30cm



ITEM
MPD118
GLUE TYPE
305
SPECIFICATION
500ml/tin, 12tins/ctn
MEAS
34X23X20cm



ITEM
MPD119
GLUE TYPE
305
SPECIFICATION
125ml/tin, 120tins/ctn
MEAS
41.5X35X25cm



ITEM
MPD105
GLUE TYPE
305
SPECIFICATION
3L/tin, 6tins/ctn
MEAS
35X28X28.5cm



ITEM
MPD107
GLUE TYPE
305
SPECIFICATION
1L/tin, 12tins/ctn
MEAS
34X23X29.5cm



ITEM
MPD108
GLUE TYPE
305
SPECIFICATION
750ml/tin, 12tins/ctn
MEAS
34X23X25.5cm

Construction And Decoration

UNIVERSAL DECORATION ADHESIVE(SBS)

Main Component

Synthetic rubber

Scope Of Application

This product is mainly used for bonding by spraying between the sponge, wood, cloth and EVA material for the sofa, screen and toy manufacturing industry .

Storage And Packing

The product is flammable, It should be stored sealed at the room temperature of 5-30°C, The sun exposure and rain are prohibited.

The shelf life is 12 months, it is available to use based on the test if being beyond the shelf life.



Technical Feature

Name Of Product	Appearance	Viscosity (25°C, mPa.S)	Solid Content (%)	Peel Strength (25°Cx48h, canvas-canvas N/2.5cm)
Universal Decoration Adhesive(SBS)	Light yellow thick liquid	70-150	32±2	≥40



ITEM
MPD175
SPECIFICATION
18L/tin, 1tins/ctn
MEAS
24X24X38.5cm

Construction And Decoration

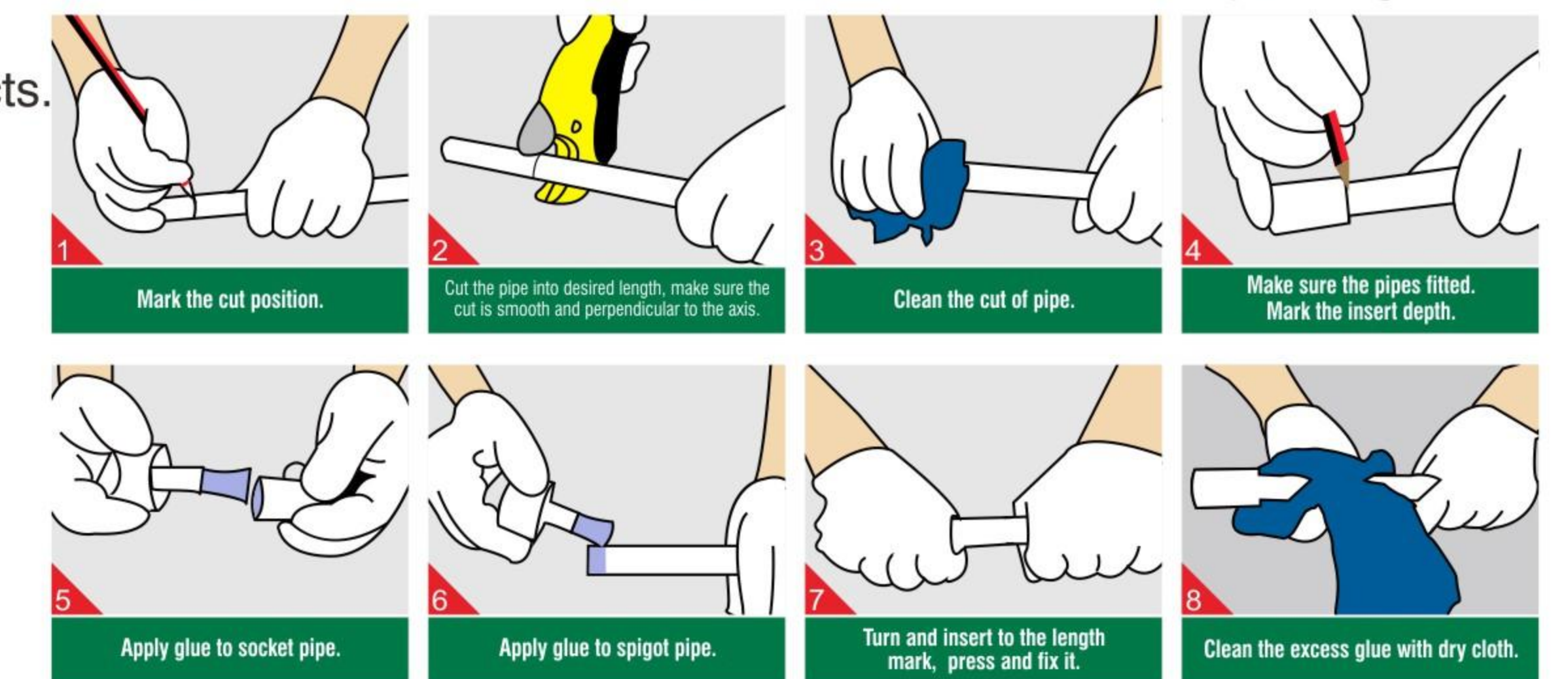
PVC GLUE

Scope Of Application

This PVC glue can be used for PVC, UPVC, CPVC pipes. It is suitable for the cementation of hard PVC drainpipe, the sewage pipe (including the UPVC pipe and the CPVC pipe) and the pipe fitting.

Storage And Packing

1. Stock the products in cool and dry place. The shelf life is 12 months. It is available to use based on passing of the test if being beyond the shelf life.
2. Preserve and transport as flammable products.



Technical Feature

Name Of Product	Appearance	Viscosity (25°C, mPa.S)	Solid Content (%)	Peel Strength (25°Cx48h, pvc pipe - pvc pipe, MPa.)
PVC GLUE (322)	Light yellow or semi-transparent thick liquid	1000-2500	≥15	≥6.5
PVC Glue (Environmental-3231)	Light yellow or semi-transparent thick liquid	200-600	≥20	≥3.4
PVC Glue (Environmental-3232)	Transparent thick liquid	100-500	≥15	≥6.5
PVC Glue (3233)	Transparent thick liquid	12000-15000	≥20	≥3.4



ITEM
MPD152
SPECIFICATION
1L/tin, 12tins/ctn
MEAS
44.2X33.4X16.5cm

ITEM
MPD153
SPECIFICATION
500ml/tin, 24tins/ctn
MEAS
41.8X31.8X27cm

ITEM
MPD154
SPECIFICATION
250ml/tin, 48tins/ctn
MEAS
41.5X28X24cm

ITEM
MPD155
SPECIFICATION
125ml/tin, 48tins/ctn
MEAS
41.5X28X17.1cm

Construction And Decoration

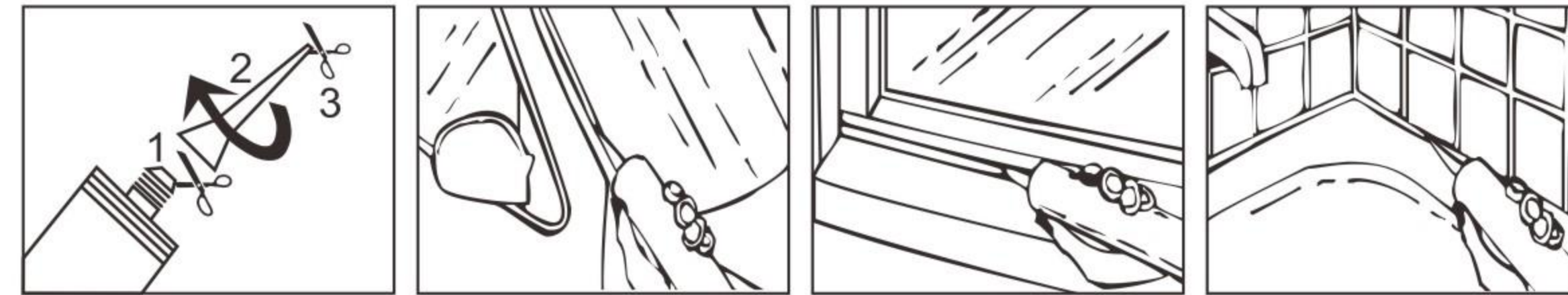
ACETOXY SILICONE

Main Composition

α,ω -Dihydroxyl Methyl Silicone

Scope Of Application

Acetoxy silicone comes from the ability to release acetic acid which also gives a vinegar-like smell while curing. This item can be used on windows and door frames, kitchen back splashes, countertop sealing, bathrooms and bathtubs, for almost all kinds of material, wood, drywall, metal, glass, ceramic etc. It's water resistance, antifungals.



Storage And Packing

- 1.The product is non-flammable. Keep dry and shade, air tight during storage.
- 2.The shelf life is 12 months.

Technical Feature

Item Commodity	Appearance	Gravity g/cm ³	Prolapse Distance (mm)		Surface solidify time. min	Extrude Property ml/min	Flexibility recover%	Peel Strength (Standard Mpa)	Fix Extend Adhesive Ability
			Vertical	Aclicnic					
Top Grade Acetic Silicone Sealant	Uniform delicate cream, without crust, gel, caking, no bubbles, no easily dispersed precipitates	0.98~1.0	≤3	No distortion	≤30	≥80	≥150	≥0.50	No damage
Medium Grade Acetic Silicone Sealant		0.98~1.0	≤3	No distortion	≤30	≥80	≥200	≥0.40	No damage



ITEM
MPH101(280ml/pc) MPH102(300ml/pc)
GLUE TYPE
TOP GRADE ACID SILICONE SEALANT
SPECIFICATION
24pcs/ctn
MEAS
MPH101: 30X20X24.5cm
MPH102: 30.2X20.3X24.5cm



ITEM
MPH103(280ml/pc) MPH104(300ml/pc)
GLUE TYPE
MEDIUM GRADE ACID SILICONE SEALANT
SPECIFICATION
24pcs/ctn
MEAS
MPH103: 30X20X24.5cm
MPH104: 30.2X20.3X24.5cm



ITEM
MPH105
GLUE TYPE
MEDIUM GRADE ACID SILICONE SEALANT
SPECIFICATION
85g/pc, 12pcs/inner, 12inners/ctn
MEAS
87.5X42.8X28.9cm

Construction And Decoration

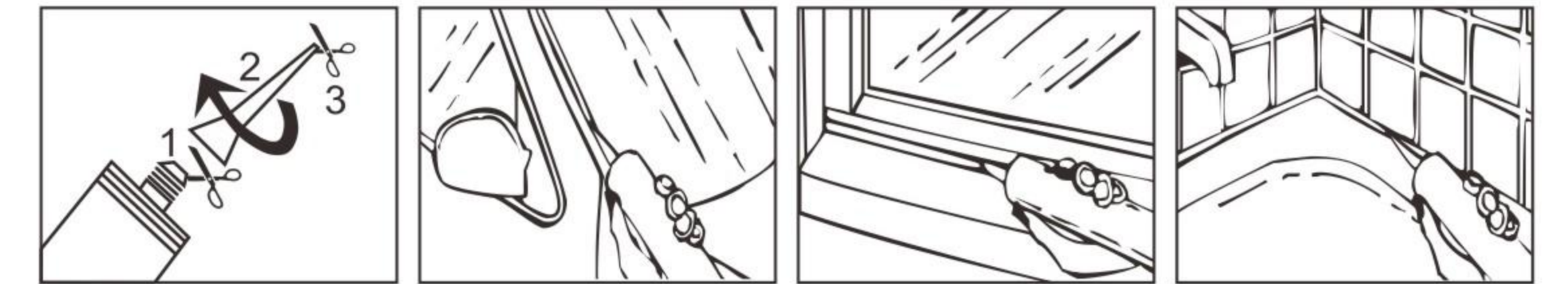
NEUTRAL SILICONE

Main Composition

α,ω -Dihydroxyl Methyl Silicone

Scope Of Application

Neutral silicone is a type of sealant can release alcohols during the curing process. This is almost odor free silicone can be used for indoor applications including kitchen installations. Roofing industrial gaskets. Compressor Pumps and refrigeration.



Storage And Packing

- 1.The product is non-flammable. Keep dry and shade, air tight during storage.
- 2.The shelf life is 12 months from the date of production.

Technical Feature

No	Item	Parameter	
		Top grade silicone sealant	Medium grade silicone sealant
1	Appearance	Exquisite well-proportioned cream, no agglomeration, no gelling, no surface solidify, hard dispersing	
2	Prolapse distance	Vertical, mm	≤3
		Aclicnic	No distortion
3	Density	0.98-1.03	1.34-1.42
4	Extrusion, ml/min	≥400	≥400
5	Surface Dry Time,mm	5-20	5-20
6	Shore A(HSA)	20-40	20-40
7	Strength Mode /Mpa	23℃Standard	≥0.4
		Under water	≥0.4
		Water-Ultraviolet radiation	≥0.4
8	Bonding destroy area %	23℃Standard	≤5
		Under water	≤5
		Water-Ultraviolet radiation	≤5
9	Elastic recover rate%	≥90	≥80
10	Extend bonding rate	60% No damage	60% No damage
11	Solidify speed mm/24h	3-8	



ITEM
MPH111(500ml/pc)
GLUE TYPE
HIGH GRADE NEUTRAL SILICONE SEALANT
SPECIFICATION
20pcs/ctn
MEAS
29X20X24cm



ITEM
MPH106(300ml/pc)
GLUE TYPE
MEDIUM GRADE NEUTRAL SILICONE SEALANT
SPECIFICATION
24pcs/ctn
MEAS
29.5X19.5X24cm

ITEM
MPH107(300ml/pc)
GLUE TYPE
HIGH GRADE NEUTRAL SILICONE SEALANT
SPECIFICATION
24pcs/ctn
MEAS
29.5X19.5X24cm

Construction And Decoration

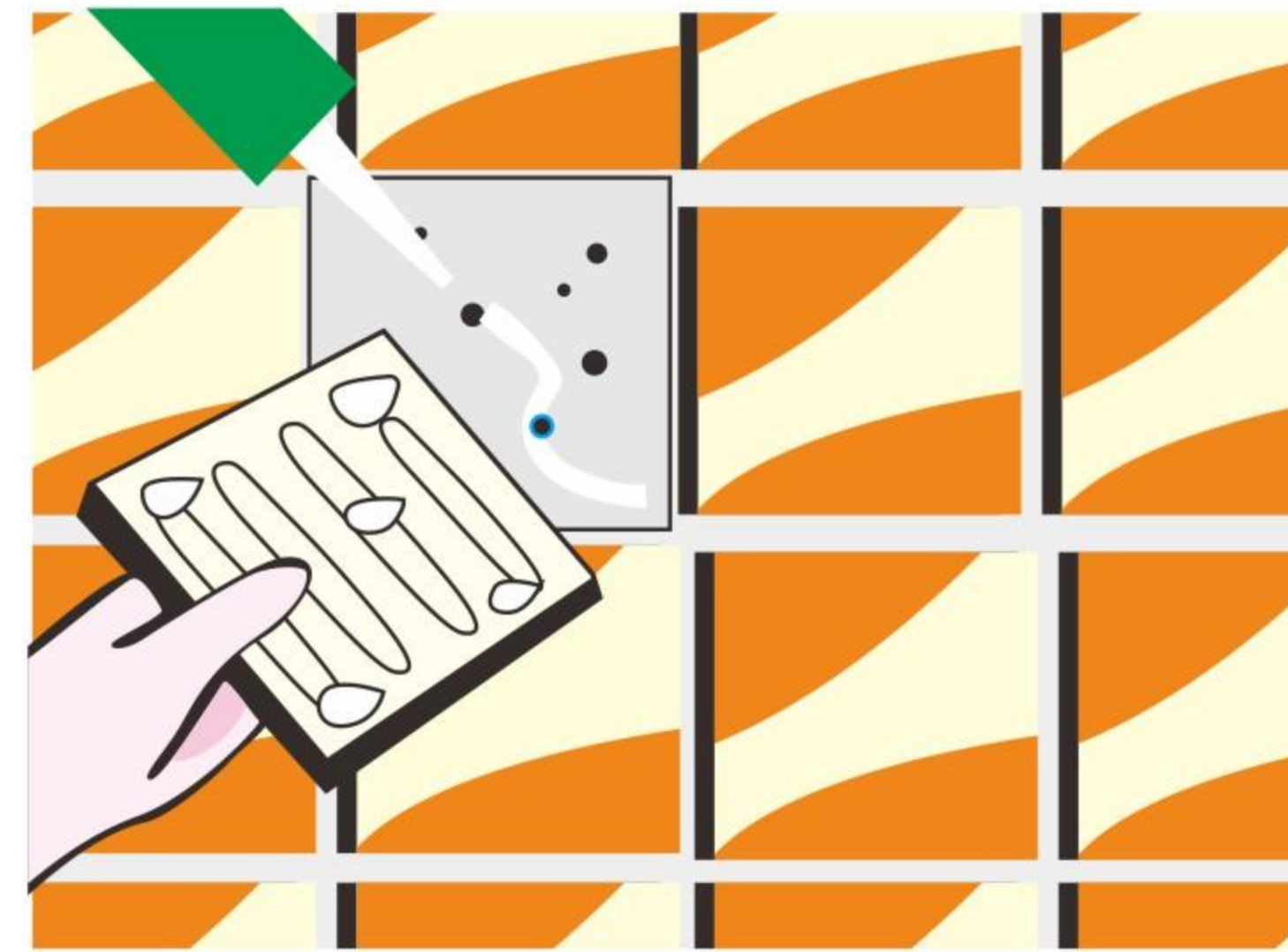
Modified Silicone <Hybrid Sealant>

Scope Of Application

Modified Silicone is a specially formulated derivative of silicone designed for special applications in the construction and manufacturing industries. It may also be referred to as modified silicone polymer or modified polyurethane. This adhesive sealant formulation has very little odor and low Voc content. It meets most green eco-friendly building standard and requirements. The item mainly used for interior and exterior applications can be applied in a wide range of temperature and weather conditions. It can be bonded to wet surface paintable after curing.

Shelflife

9 months in unopened packaging in a cool and dry storage place at temperatures between +5°C and +25°C.



ITEM
MPB182
SPECIFICATION
120ml/pc, 50pcs/ctn
MEAS
39X29X20.2cm



ITEM
MPB181
SPECIFICATION
60ml/pc, 100pcs/ctn
MEAS
41X27X15.3cm

Construction And Decoration

CAULK FOR CERAMIC TILES

Product Description

Applicable to tile, mosaic, stone, wood, glass, aluminum plate and other materials gap decoration and beautification, also for home decoration edge sealing.

Product Characteristic

Super corrosion resistance, antifungals, anti-aging, sealing, waterproof and other excellent properties. Bright as crystal, hard as diamond, strong bonding, never deformed. Solvent free, odorless, simple operation.

Construction Process

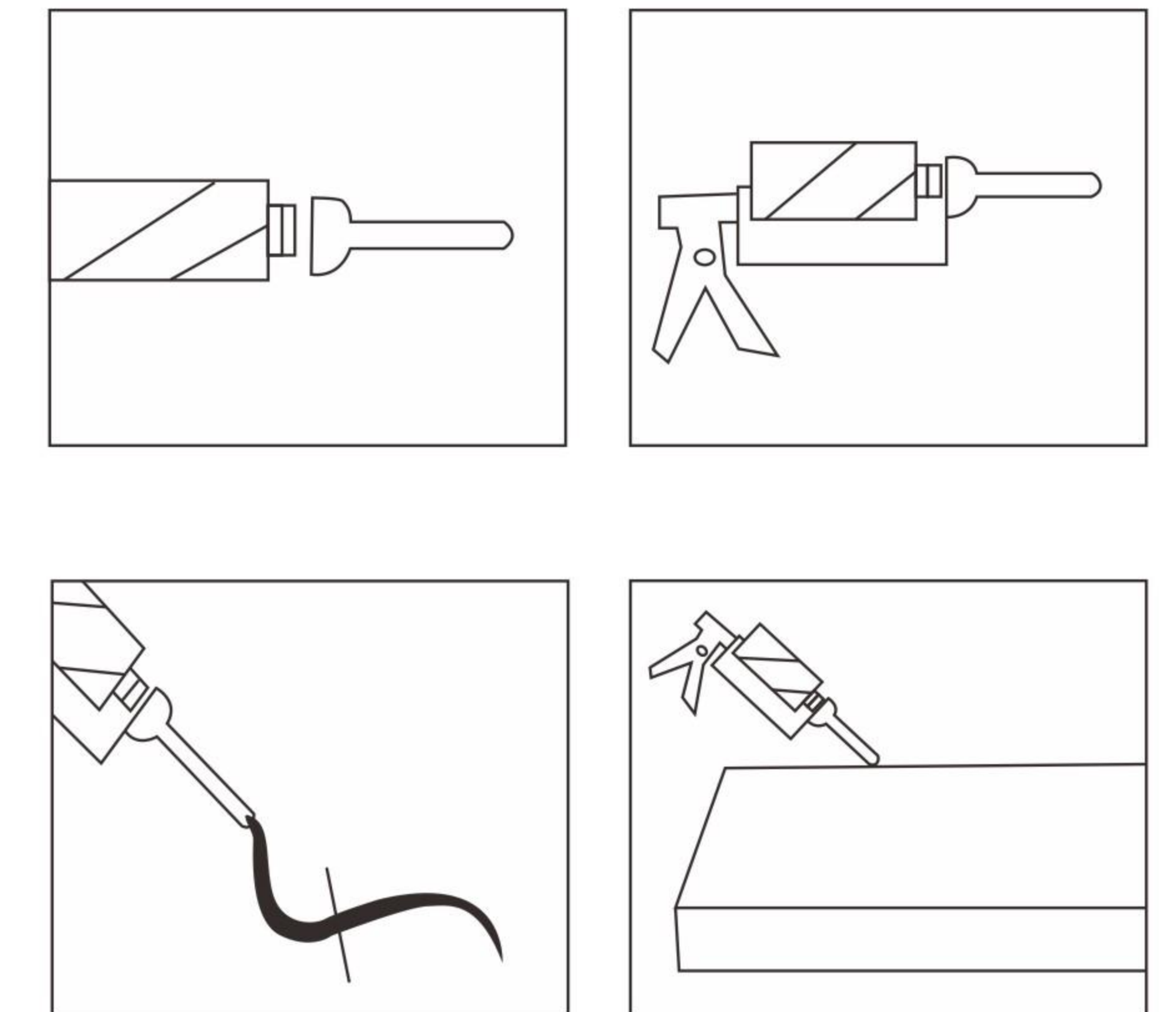
1. After ceramic tiles is pasted, clean the surface of the drill and crevice, keep dry and dust-free.
2. The rubber nozzle is installed, and then the special high-quality and labor-saving rubber gun is put on. After the A/B combination is extruded.
3. Remove the part around 20-30cm long if it is not being mixed uniformly. After mixing uniformly the colloid can be constructed.

Precautions

1. Surfaces must be clean, dry and free of dirt, grease, oil or water.
2. Squeeze the tube and push filler firmly into the crack/hole and smooth off the surface with a spatula/scrapper.
3. Since this filler is virtually non-shrinking, no excessive overfilling is required.
4. Allow 2-3 hours to set in 2mm applications. Allow for longer drying times for thicker applications and cooler weather.
5. Packing specification: 400ml/set, 3kg/set.

Usage Level

Tile size	m ² /cartndge	Tile size	m ² /cartridge
800*800mm	22m ² /cartndge	300*450mm	13m ² /cartridge
600*600mm	18m ² /cartndge	200*200mm	8m ² /cartridge
400*400mm	14m ² /cartndge	150*150mm	6m ² /cartridge
330*330mm	12m ² /cartndge	100*100mm	4m ² /cartridge
300*300mm	11m ² /cartndge	50*50mm	2m ² /cartridge
300*600mm	24m ² /cartndge	Mosaic	1m ² /cartridge



ITEM
MPJ103
GLUE TYPE
CREAMIC TILE SEALANT
SPECIFICATION
400ml/set, 30sets/ctn
MEAS
19X67X24.5cm

Construction And Decoration

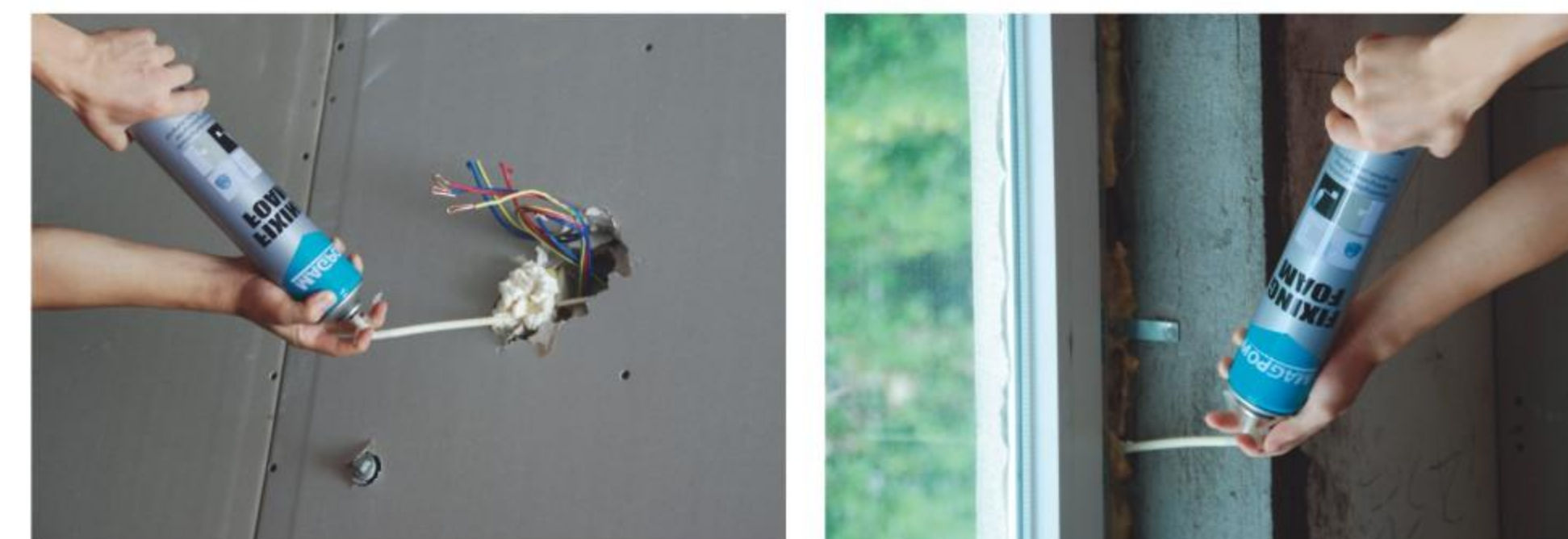
FIXING FOAM

Scope Of Application

Installing, fixing and insulating of door and window frames;
Filling and sealing of gaps, joint, openings and cavities;
Connecting of insulation materials and roof construction;
Bonding and mounting;
Insulating the electrical outlets and water pipes;
Heat preservation, cold and sound insulation;
Packaging purpose, wrap the precious & fragile commodity, shake-proof and anti-pressure.

Storage And Packing

1.Store in temperature between +5°C to +25°C, Keep in cool, shade and well ventilated area. Make sure the valve stand upward.
2.750ml/can, 500ml/can,12pcs/ctn, Straw type and Gun type.



ITEM MPD166
GLUE TYPE POWER GLUE
SPECIFICATION 500ml/pc, 12pcs/ctn
MEAS 28X21X25.5cm

ITEM MPD167
GLUE TYPE POWER GLUE
SPECIFICATION 750ml/pc, 12pcs/ctn
MEAS 28X21X36cm

Technical Feature

Item	Parameter
Base	Polyurethane
Consistency	Stable Foam
Curing System	Moisture-cure
Tack-Free Time (min)	7~15
Drying Time	Dust-free after 20-25 min
Cutting Time (hour)	1~1.5 (+25°C), 2~3 (-25°C)
Yield (L)	35~40
Shrink	None
Post Expansion	None
Cellular Structure	60~65% open cells
Specific Gravity (kg/m³)	16~20
Temperature Resistance	40°C~+80°C
Application Temperature Range	+5°C~+35°C
Colour	Champagne
Fire Class (DIN 4102)	B3
Insulation Factor (Mw/m.k)	<36
Compressive Strength (kPa)	>100
Tensile Strength (kPa)	>28 (10%)
Adhesive Strength(kPa)	>75
Water Absorption (ML)	0.5~2(no epidermis) <0.5(with epidermis)



ITEM MPD167(GUN)
GLUE TYPE POWER GLUE
SPECIFICATION 750ml/pc, 12pcs/ctn
MEAS 28X21X34cm

Daily Necessary

SUPER GLUE LIQUID AND GEL

Main Component

Ethyl-Cyanoacrylate

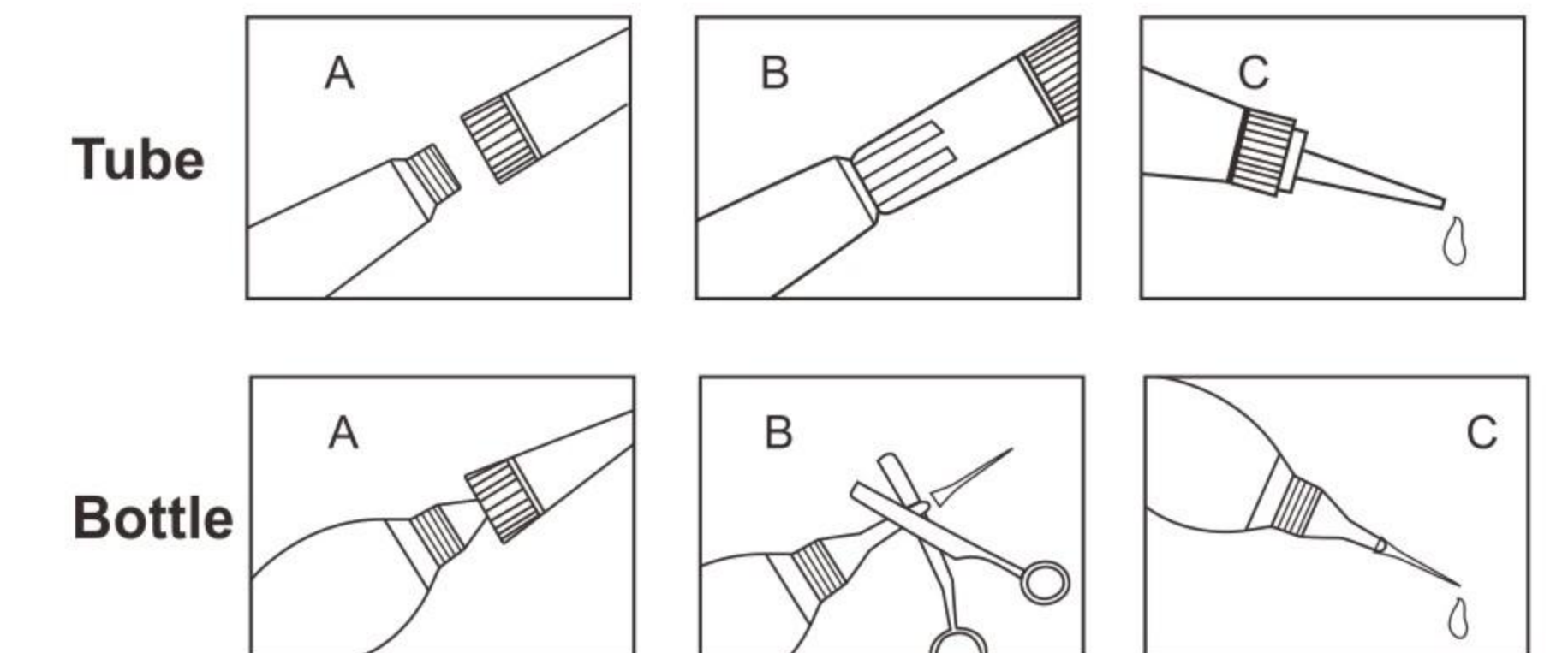
Scope Of Application

This product could be applied to bond of metal, rubber, plastic, wood, pottery in the fields of daily household repairing, arts making and repairing, apparatus first orienting etc.

Storage And Packing

1.The product is non-flammable. Keep dry and out of light, low temperature (20-25°C) during storage.

2. The shelf life is 12 months. If the glue does not solidifying beyond the shelf life, it could be used still. But the solidifying speed and adhesive intensity would be affected in some degree.



Technical Feature

Type	Appearance	Curing time(s)	Dynamic Viscosity (20°C, mPa.s)	Tensthe-shear strength (60°C X 3h, MPa)
Super glue	Transparent or Light yellow liquid	≤25	30~40	≥8
Power glue		≤20	20~40	≥12
Crazy glue		≤20	20~40	≥14
Gel	Transparent Gel	≤20	Gel	≥12



ITEM MPC101
GLUE TYPE CRAZY GLUE
SPECIFICATION 10g/pc, 1pc/card, 12cards/inner, 12inners/ctn.
MEAS 35X30.5X38.5cm

ITEM MPC121
GLUE TYPE GEL GLUE
SPECIFICATION 3g/pc, 2pcs/card, 24cards/inner, 12inners/ctn.
MEAS 66X24X43.5cm

ITEM MPC102
GLUE TYPE POWER GLUE
SPECIFICATION 3g/pc, 1pc/card, 12cards/inner, 12inners/ctn.
MEAS 33.5X23X38.5cm

ITEM MPC103
GLUE TYPE POWER GLUE
SPECIFICATION 10g/pc, 1pc/card, 12cards/inner, 12inners/ctn.
MEAS 35X30.5X38.5cm



ITEM MPC104
GLUE TYPE SUPER GLUE
SPECIFICATION 3g/pc, 1pc/card, 12cards/inner, 12inners/ctn.
MEAS 33.5X23X38.5cm

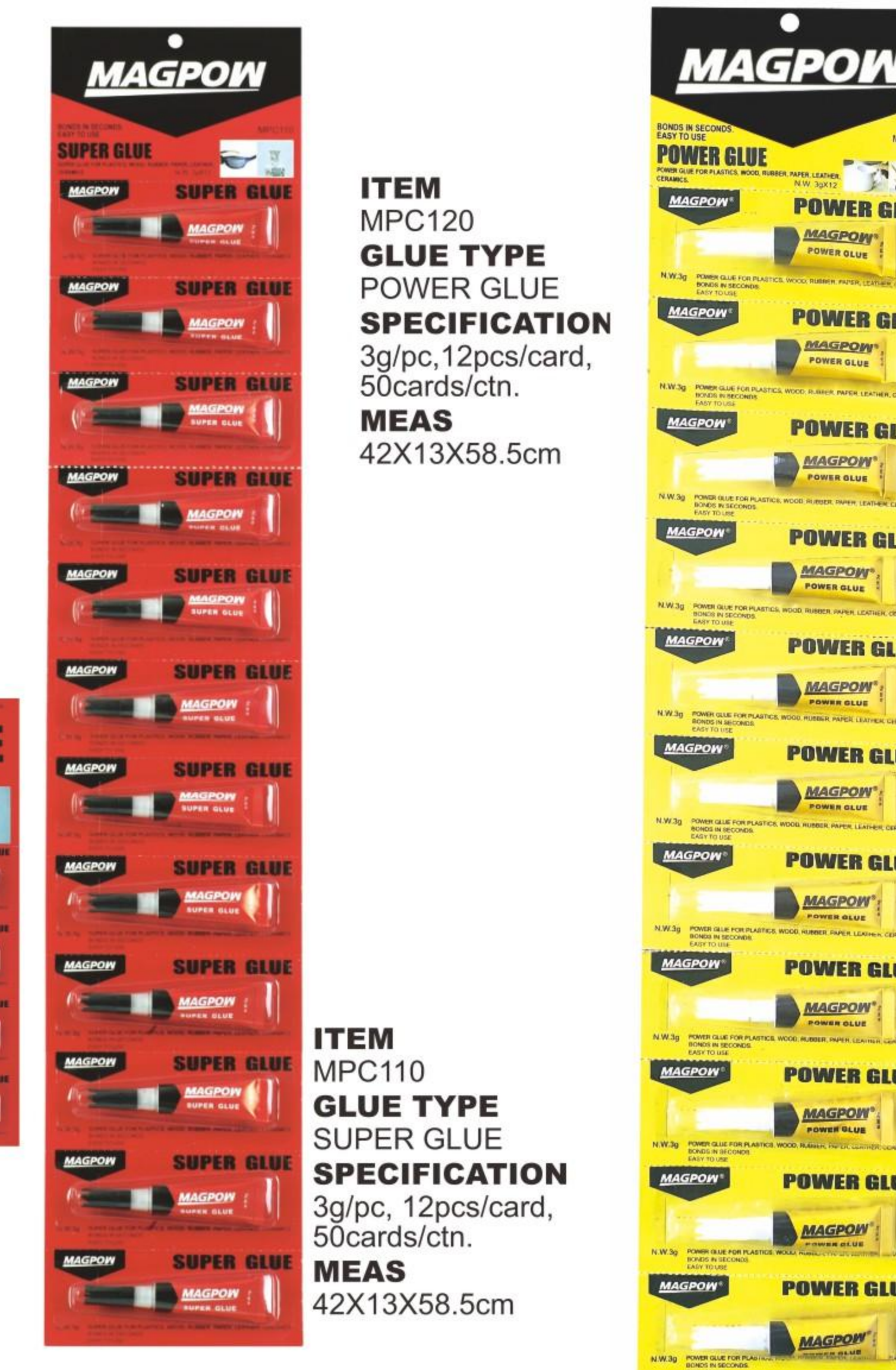
ITEM MPC123
GLUE TYPE POWER GLUE
SPECIFICATION 3g/pc, 3pc/card, 12cards/inner, 12inners/ctn.
MEAS 46.5X39X31cm



ITEM MPC115
GLUE TYPE POWER GLUE
SPECIFICATION 3g/pc, 12pcs/card, 24cards/ctn.
MEAS 37.5X18.5X24.5cm

ITEM MPC122
GLUE TYPE POWER GLUE
SPECIFICATION 4g/pc, 12pcs/card, 40cards/ctn.
MEAS 42X40X24cm

ITEM MPC108
GLUE TYPE SUPER GLUE
SPECIFICATION 3g/pc, 12pcs/card, 24cards/ctn.
MEAS 37.5X18.5X24.5cm



ITEM MPC120
GLUE TYPE POWER GLUE
SPECIFICATION 3g/pc, 12pcs/card, 50cards/ctn.
MEAS 42X13X58.5cm

ITEM MPC110
GLUE TYPE SUPER GLUE
SPECIFICATION 3g/pc, 12pcs/card, 50cards/ctn.
MEAS 42X13X58.5cm

Daily Necessary

MOUSE & FLY KILLING GLUE

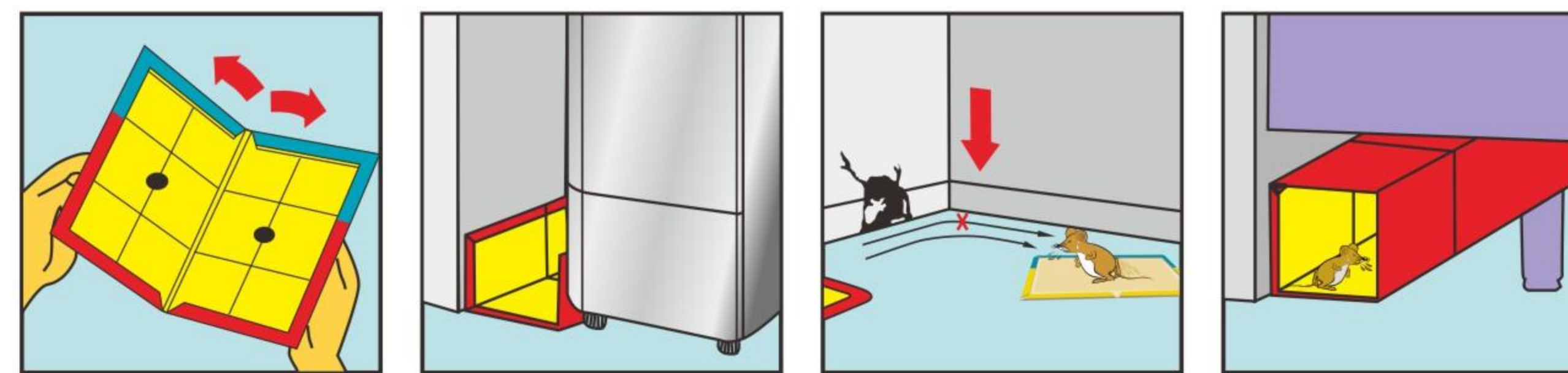
Main Component

Natural rubber, Polyisobutylene

2. The shelf life is 12 months from the date of production.

Scope Of Application

This product could be widely used in the place where mouse or fly appears, such as house, hotel, market, livestock yard and available for operating both outdoor and in-door.



Storage And Packing

1. Preserve and transport as non-dangerous products.

Technical Feature

Item	Appearance	Initial Bonding Effect	Dynamic Viscosity (100°C, mPa.S)	Flowing character
Packed in tube mouse glue	Transparent or Light yellow thick liquid	No. 2-No. 3	1000-1400	55°C, Vertical not flow
Paper board mouse glue	Transparent thick liquid	No. 3	5000-8000	65°C, Vertical not flow
Plastic tube fly killing glue	Transparent or Light yellow thick liquid	No. 2-No. 3	1000-1400	55°C, Vertical not flow



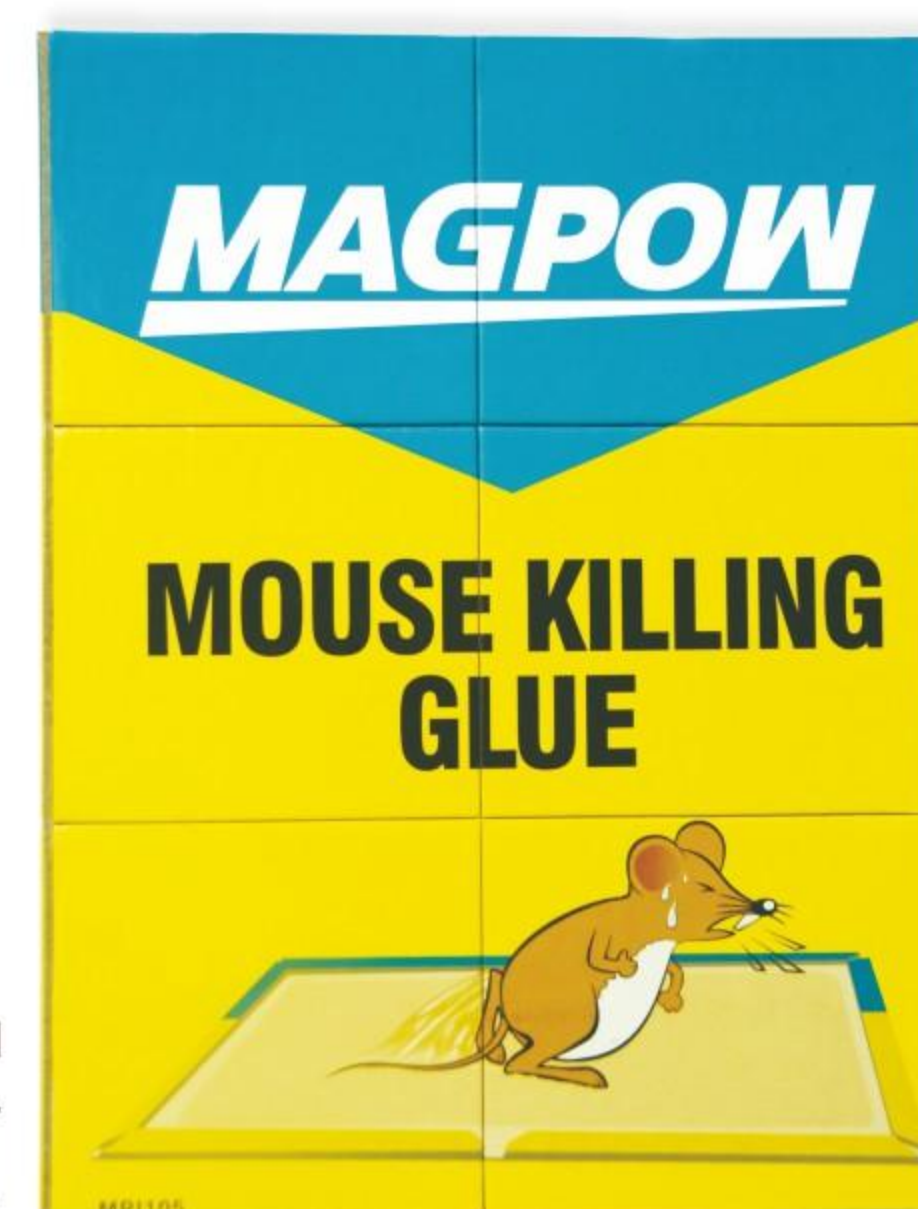
ITEM
MPI101
SPECIFICATION
4pcs/set, 24sets/inner, 12inners/ctn
MEAS
62.5X37.5X24cm



ITEM
MPI102
SPECIFICATION
110g/pc, 1pc/inner, 25inners/bag, 4bags/ctn.
MEAS
53X41.5X24.5cm



ITEM
MPI105
SPECIFICATION
30g/pc, 100pcs/ctn.
MEAS
54.5X34.2X24.2cm



Daily Necessary

ALL PURPOSE ADHESIVE

Scope Of Application

This product is used to bond all kinds of hard and soft material, such as: glass, metal, porcelain, plastic film, phenolic foam, polystyrene foam, natural rubber, wood, leather, synthetic leather, fur, yew, decoration wooden line, paper, cardboard, carpet, craft work, etc.

2. Preserve and transport as flammable products.
3. Packing: 20ml/color box, 33ml/color box, 25kg/barr-el in plastic barrel.



Storage And Packing

1. Stock the products in cool and dry place. The shelf life is 12 months. It is available to use based on passing of the test if being beyond the shelf life.

Technical Feature

Name Of Product	Appearance	Viscosity (25°C, mPa.S)	Solid content (%)	Tensile Shear Strength (Wood-Wood, MPa)	Peel Strength (25°Cx48h, canvas-canvas N/2.5cm)
All purpose adhesive	Transparent thick liquid	4000-8000	≥40	≥2	≥40



ITEM
MPE101
SPECIFICATION
20ml/pc, 25pcs/bag, 8bags/ctn
MEAS
29X27X24.5cm



ITEM
MPE107
SPECIFICATION
50ml/card, 12cards/inner, 12inners/ctn
MEAS
39X37.5X44.5cm



ITEM
MPE106
SPECIFICATION
33ml/pc, 25pcs/bag, 8bags/ctn
MEAS
35.5X27.5X31.5cm



ITEM
MPE102
SPECIFICATION
5ml/pc, 10pcs/gard, 24cards/inner, 4inners/ctn
MEAS
43.5X39.5X27cm